

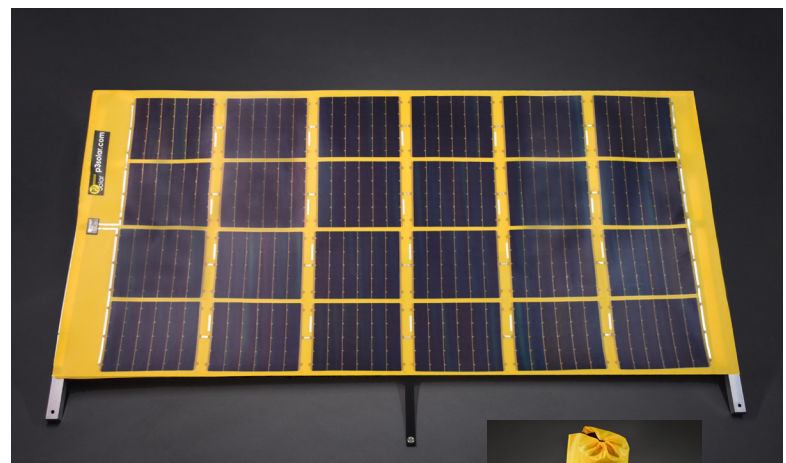
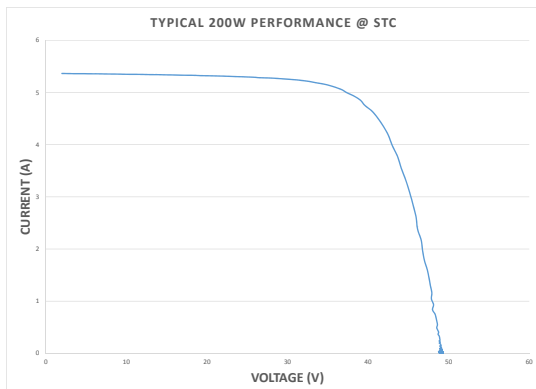
# EZ-Out 200W Solar System

The P3Solar EZ-Out 200W Solar System was designed for rapid deployment allowing setup in minutes. The EZ-Out contains a corrosion resistant 6063 aluminum frame and stainless steel hardware. With a fixed optimal solar angle of 30 degrees and a 200W rotable solar charger, the EZ-Out provides a sturdy and efficient solar charging solution. The EZ-Out Solar System stores in a convenient carry bag, making it easy to transport and store.

## EZ-OUT 200W Product Specifications

Electrical Characteristics @ STC*	
Rated Power (watts)	200
Rated Voltage at MPP (VDC)	38
Rated Current at MPP (amp)	5.2
Open Circuit Voltage (volts)	48
Short Circuit Current (amps)	5.9
Solar Panel Physical Characteristics	
Rolled (around frame) Dimensions, mm	203.2 Dia x 981
Rolled (around frame) Dimensions, inches	8 Dia x 38.625
Deployed Dimensions, mm	889 x 1956 x 1.0
Deployed Dimensions, inches	38.625 x 77.75 x 0.04
Max. Deployed Thickness at J-Box, mm (in.)	12 (0.5)
Weight, kg(lb)	3.18 (7.0)
Power to Weight Ratio, watt/kg(watt/lb)	63 (29)
Thermal Characteristics	
Temperature Coefficient for Power (%/°C)	-0.43
Temperature Coefficient for Voltage (%/°C)	-0.38
Temperature Coefficient for Voc (%/°C)	-0.33
Temperature Coefficient for Isc (%/°C)	-0.03
Cell Temperature Operating Range (°C)	-40 to 85
Voltage, Open Circuit @ -40°C (volts)	55
Voltage, Vmpp @ 50°C (volts)	34
Voltage, Vmpp @ 75°C (volts)	30
Aluminum Frame & Carry Bag Physical Characteristics	
Collapsed Dimensions, mm	184.15 x 76.2 x 1016
Collapsed Dimensions, inches	7.25 x 3 x 40
Deployed Dimensions, mm	1016 x 1955.8
Deployed Dimensions, inches	40 x 77
Frame Weight, kg(lb)	3.40(7.5)
Carry Bag Dimensions, mm	228.6 Dia x 1016
Carry Bag Dimensions, inches	9 Dia x 40
Total System Weight in Bag, kg(lb)	9.3(20.5)

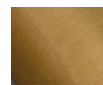
\*Electrical Characteristics- tested at Standard Test Conditions (STC): irradiance level 1000W/m2, spectrum AM 1.5 and cell temperature 25° C. Tolerance +/-15%. The performance of this product may increase by up to ~5% after the first several hours of exposure to sunlight.



Saffron (Yellow)  
PN 18005S



Also available in:



Coyote (Brown)  
PN 18005C



4500 E. Speedway Blvd. Suite 50  
Tucson, AZ 85712 USA  
520-775-1390  
sales@p3solar.com

sales@p3solar.com